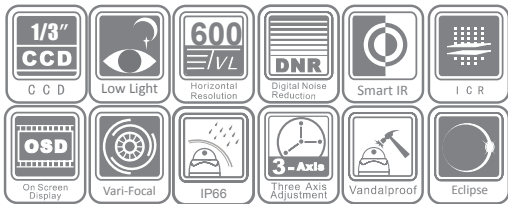


# DS-2CC5281P(N)-AVPIR2

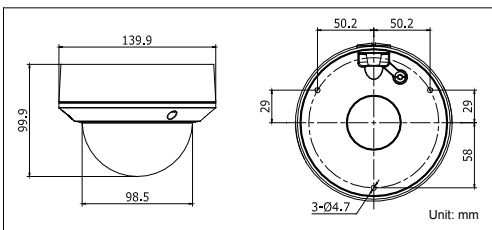
## 600 TVL Outdoor Vandal Proof IR Dome Camera



### Key features

- 1/3" SONY CCD
- 600 TVL Horizontal Resolution
- True Day/Night
- 2.8–12mm Vari-focal Lens
- OSD Menu, DNR, Smart IR, Digital WDR, Eclipse
- 30m IR Distance
- Vandal Proof, IP66 Rating

### Dimensions



### Accessories



DS-1216ZJ  
(Wall Mount)



DS-1238ZJ  
(Pendant Mount)

DS-2CC5281P(N)-AVPIR2	
<b>Camera</b>	
Image Sensor	1/3" SONY CCD
Signal System	PAL/NTSC
Effective Pixels	PAL:752 (H) × 582 (V) NTSC:768 (H) × 494 (V)
Min. Illumination	0.001Lux @ (F1.2,AGC ON),0 Lux with IR 0.0014Lux @ (F1.4,AGC ON),0 Lux with IR
Shutter Speed	PAL: 1/50 s to 1/100,000 s NTSC: 1/60 s to 1/100,000 s
Lens	2.8 - 12 mm @ F1.4 Angle of view: 80° - 27.2°
Lens Mount	φ14
Auto Iris	DC drive
Angle Adjustment	Pan: 0 - 355°, Tilt: 0 - 75°, Rotation: 0 - 355°
Day & Night	IR cut filter with auto switch
Horizontal Resolution	600 TVL (Color), 650 TVL (B/W)
Synchronization	Internal/Power synchronization
Video Output	1Vp-p composite output (75 Ω/BNC) Test monitor out [1Vp-p composite output (75 Ω/BNC), device line]
S/N Ratio	More than 62 dB
<b>Menu</b>	
Camera ID	On/Off (52 letters, position adjustable)
D/N Mode	Auto /Day /Night/ EXT1/ EXT2
White Balance	ATW/PUSH/USER1/USER2/ANTI CR/MANUAL/PUSH LOCK
Private Mask	On/Off, maximum 8 zones
Motion Detection	On/Off
Back Light	BLC/HLC/Off
Language	English/Chinese/ Korean/ Italian/ Russian/ Portuguese/ German/ French
Function	Smart IR, ATR, HLC, DNR, Sharpness, Brightness, Contrast, Hue, Gain, Mirror, Defect Pixel Correction
<b>General</b>	
Working Temperature/Humidity	-10 °C - 60 °C (14 °F - 140 °F) Humidity 90% or less (non-condensing)
Power Supply	24 V AC ± 10%, 12 V DC ± 10%
Power Consumption	Max. 4 W (Max. 4.5 W with IR cut filter on)
Ingress Protection level	IP66
IR Range	approx 20 to 30 meters
Impact Protection	IEC60068-2-75 test, Eh, 50J; EN50102, up to IK10.
Dimension	Φ 139.9 × 99.9 mm (Φ 5.51" × 3.93")
Weight	800 g (1.76 lbs)

### Available models

PAL: DS-2CC5281P-AVPIR2  
NTSC: DS-2CC5281N-AVPIR2