

## DS-9664NI-ST

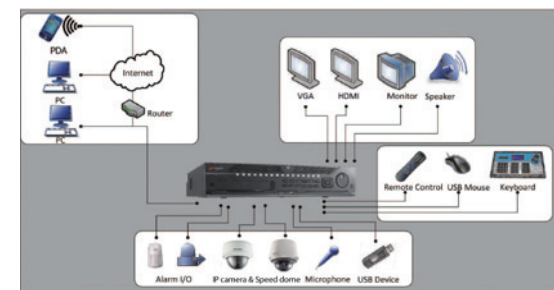
## Embedded NVR

### Specifications

DS-9664NI-ST	
<b>Video / Audio input</b>	
IP video input	64-ch
Two-way audio	1-ch, BNC (2.0 Vp-p, 1 kΩ)
<b>Video / Audio output</b>	
Recording resolution	5MP / 3MP / 1080P / UXGA / 720P / VGA / 4CIF
CVBS output	1-ch, BNC (1.0 Vp-p, 75 Ω) Resolution: 704 × 576 (PAL); 704 × 480 (NTSC)
HDMI output	1-ch, resolution: 1920 × 1080P / 60Hz, 1600 × 1200 / 60Hz, 1280 × 1024 / 60Hz, 1024 × 768 / 60Hz
VGA output	1-ch, resolution: 1920 × 1080P / 60Hz, 1600 × 1200 / 60Hz, 1280 × 1024 / 60Hz, 1024 × 768 / 60Hz
Audio output	2-ch, BNC (Linear, 600 Ω)
Playback resolution	5MP / 3MP / 1080P / UXGA / 720P / VGA / 4CIF
Synchronous playback	16-ch 4CIF
<b>Storage</b>	
SATA	8 SATA interfaces
eSATA	1 eSATA interface
Capacity	Up to 4TB capacity for each disk
<b>External interface</b>	
Dual network interface	10M / 100M / 1000M self-adaptive Ethernet interface, dual IP, load balancing, network redundancy
Network bandwidth	Up to 160Mbps input, 160Mbps output, up to 128 network streams
Serial interfaces	1 RS-232, 1 RS-485 for PTZ control, 1 RS-485 for keyboard
USB interface	2 × USB2.0
Alarm in	16
Alarm out	4
<b>General</b>	
Power supply	100~240 VAC, 6.3A, 50~60Hz
Consumption	≤45W
Working temperature	-10°C ~ +55°C (14 °F ~ 131 °F)
Working humidity	10% ~ 90%
Chassis	19-inch rack mountable 2U chassis
Dimensions (W x D x H)	445 × 470 × 90 mm (17.52" × 18.5" × 3.54")
Weight	≤ 8 kg (17.64 lb) ( without hard disk or DVD-R/W )

### Key Features

- 64 channel IP camera input
- Third-party network camera supported
- Up to 5 Mega pixel (2560×1920) recording resolution
- Simultaneous HDMI, VGA and CVBS output
- HDMI and VGA output up to 1920 x 1080P resolution
- Dual gigabit network interfaces
- eSATA interface for recording or archiving
- Flip open front panel for easy HDD installation
- 16-ch 4CIF synchronous playback
- JPEG picture capture and playback
- Tag video clip, search and playback by tag
- Compatible with free Hikvision DDNS
- Digital zoom on live view and playback



Rear Panel of DS-9664NI-ST



- |                            |  |
|----------------------------|--|
| 1. Video out               | 8. LAN1, LAN2 network interface                                      |
| 2. Audio out               | 9. RS-485 termination dip switch                                     |
| 3. Line in                 | 10. RS-485 serial interface, keyboard interface, alarm in, alarm out |
| 4. RS-232 serial interface | 11. GND  |
| 5. VGA interface           | 12. 100~240 VAC power input  |
| 6. HDMI interface          | 13. Power switch   |
| 7. eSATA interface         |  |