



4K Fixed Dome/ Fixed Network Camera



WV-SFV781L



WV-SPV781L

Security Systems Business Division

Panasonic System Networks Co., Ltd.

Panasonic

Outdoor vandal resistant



WV-SFV781L



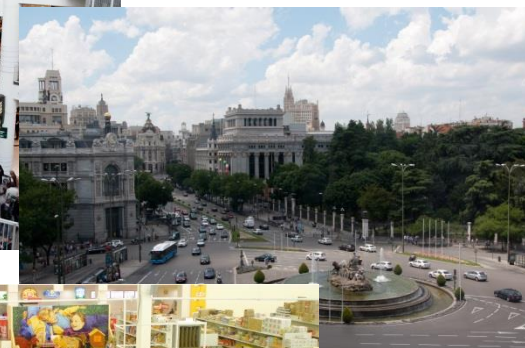
WV-SPV781L (Available in July)

4K Fixed Dome/ Fixed Network Camera

- ✓ Reduce the load on your operation and management
- ✓ Clearer monitoring with 4K resolution
- ✓ Capture clear images in any environment

4K Fixed Dome/ Fixed Network Cameras are suitable for monitoring open areas:

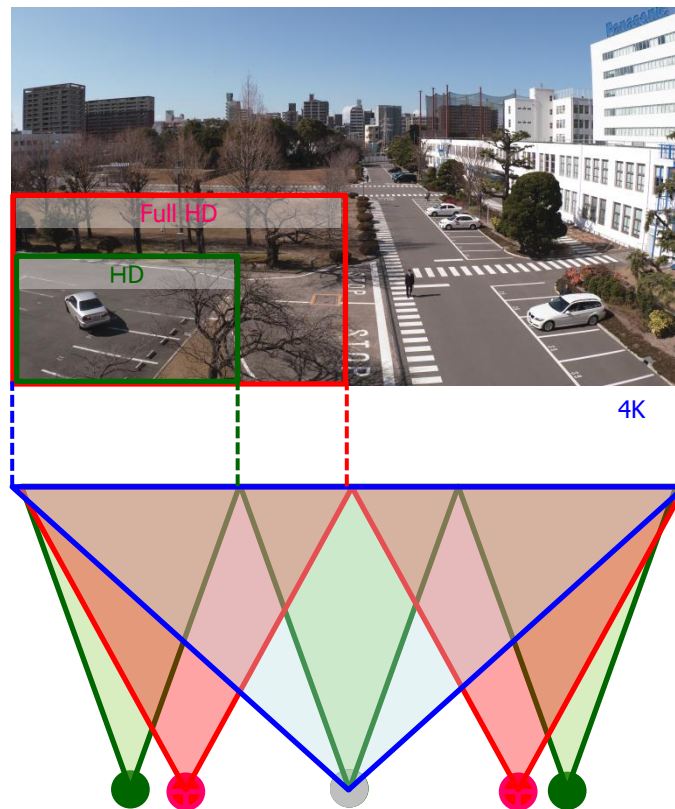
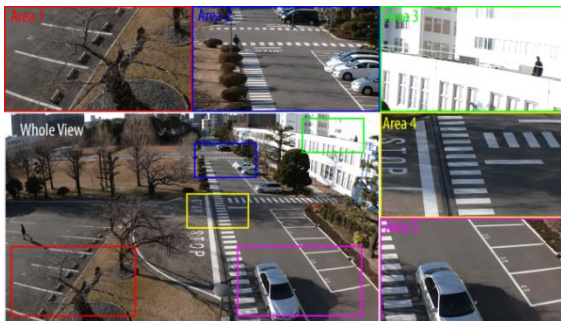
- ✓ City Surveillance
- ✓ Intersections
- ✓ Squares
- ✓ Airport
- ✓ Stations
- ✓ Port facilities
- ✓ Plant
- ✓ Shopping Malls



and more.

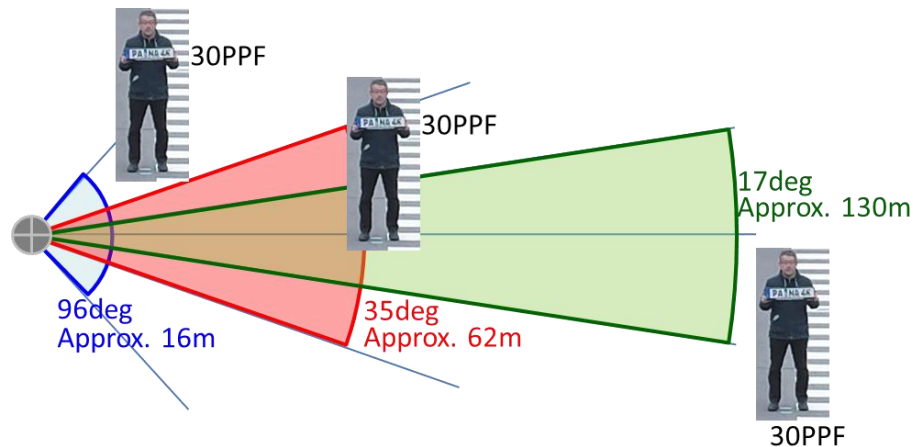
Reduce the load on your operation

- ✓ **Reduce the number of cameras**
4K cameras can cover angle of view the same as 9 units of 720p cameras or 4 units of 1080p cameras. Therefore, 4K cameras can reduce a blind spot as they cover wider than a Full HD camera or a HD camera.
- ✓ **Reduce the load on operation**
The number of cameras to be monitored can be reduced by 4K camera which covers wider angle of view than a Full HD camera or a HD camera.
Whole area and five cropping areas can be viewed with i-PRO system at the same time. You can watch images of whole and detailed point at a time.

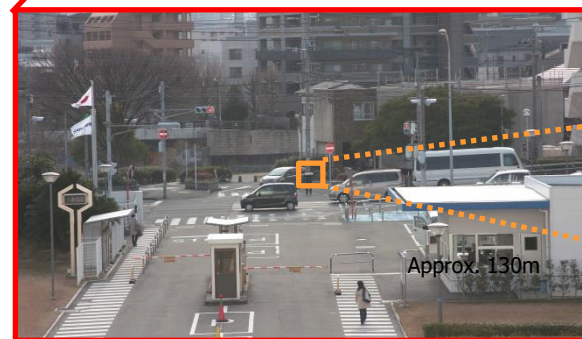


Wide to distant situational awareness

You can select and get 4K resolution images from a specific area to a wide area with 6x optical zoom, depending on the installation location. When capturing an all-around view of the surrounding area on the wide mode, the 4K cameras provide wide and distant situational awareness and eliminates blind spots.



96 ° (Wide)



17° (Tele)



Approx. 130m

Detailed images with 4K resolution

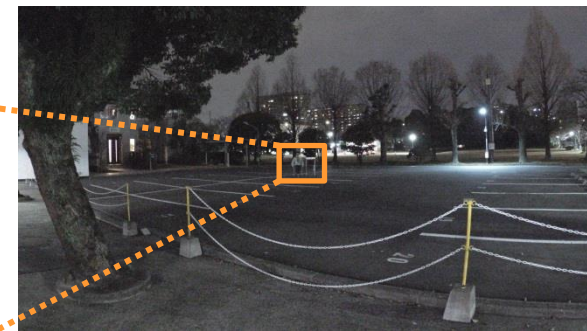
High resolution is required to capture a large area in detail. 4K (8 megapixel) resolution enables clear identification from the center to the edge, delivering very detailed images.



edge part

Clear images with low light or complete darkness

Equipped with F1.6 large diameter lens and high-sensitive sensor, the 4K cameras produce a color image with a minimum illumination of 0.3 lux. And, these cameras have a built-in IR LED to capture clear images in low light or complete darkness.

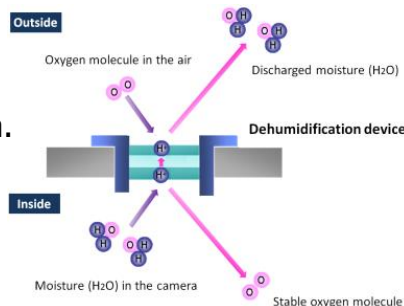


0.3lx

Capture clear images, no matter what environment ;

IP66- and NEMA 4X-rated robustness

The 4K cameras support IP66- and NEMA 4X-rated weather resistant. The built-in electrical dehumidification keeps the camera dry inside, using electrolysis to remove any moisture from the camera. This anti-humidity technology is safe and green due to low power consumption and no heaters or mechanical fans being used.



Capture clear images, even if it is raining ;

Hydrophilic coating

The hydrophilic coating on the camera dome keeps visibility in rainy weather, sheeting water off instead of forming droplets that scatter light.



Unbreakable, even if shocked externally ;

Built-in shock absorber

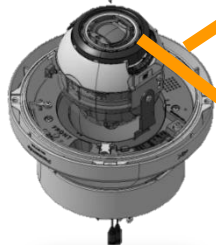
The 4K cameras are IK10-rated impact resistant. In case the camera is subjected to mechanical shock, the built-in shock absorber protects the optical system from the impact by moving the lens system backward. The energy absorbing mechanism consisting of springs and a decelerator effectively diminishes the impact.





Panasonic 4K cover

4K dome cover using the proprietary technology of Panasonic delivers clear view as if not using the dome cover.



IP66-, NEMA-4X and IK10-rated robustness

Panasonic 4K optical 6x zoom lens

F1.6, large diameter, 4K resolution lens delivers clear view, 6x optical zoom for installation flexibility.



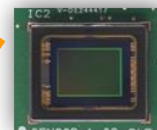
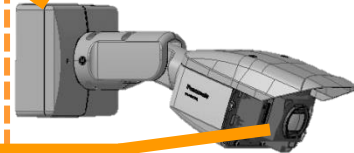
12-megapixel, 1/1.7-inch MOS sensor

High-sensitivity sensor with newly designed optical system captures clear details with up to 12 megapixel resolution.





Powerful 4K Engine

Equipped with a dual-core 1GHz processor, the new 4K Ultra Engine performs vast calculations per second including Wide Dynamic Range (WDR).



WV-SFV781L

WV-SPV781L


		WV-SFV781L	WV-SPV781L
			
Type		Outdoor Vandal resistant	
Image sensor		1/1.7 type MOS Sensor	
Max. video resolution (pixel)		12 megapixel, 4,000 x 3,000	
Max. frame rate		15 fps (12 mega pixel mode), 30 fps (8 mega pixel mode)	
Day / Night		Yes (IR Cut filter Removal)	
Minimum Illumination	Color	0.3 lux	
	B/W	0.04 lux / 0.1 lux with IR-LED	
Angular Field of View *16:9 mode	Horizontal	17° (Tele) - 96° (Wide)	17° (Tele) - 97° (Wide)
	Vertical	9.3° (Tele) – 54° (Wide)	9.4° (Tele) – 55° (Wide)
Audio		Two-way	
SD memory card slot		1 slot (SDXC/SDHC/SD)	
Ambient Operating Temperature		-45°C ~ +50°C (-49°F ~ 122°F)	
Dimension (excluding base bracket)		ø228 mm × 189 mm (H)	131mm(W), 130mm(H), 380mm(D)