

# SY120SA Basic Operation Manual

V3.22

## Content

1.Login/Logout Procedure & Longin Password alter .....	Page 1
2.Add Card Operation Procedure .....	Page 2
3.Delete Card Operation Procedure .....	Page 2
4.Modify Card Operation Procedure .....	Page 3
5.System DI Function Setup .....	Page 4
6.System DO Function Setup .....	Page 5
7. System Group and Timer Function Setup .....	Page 6
8.Setup Card Number with Password Open Door Way .....	Page 7
9.System Default.....	Page 8
10.Steal Alarm System Function Setup .....	Page 8
11.Anti-Force Function Setup .....	Page 9
12.Enternal Function Setup .....	Page 9
13.System Communication Identify Number Setup .....	Page 9
14.SY120SA and Other SY120SA Connection Diagram .....	Page 10
15.SY120SAand MD120EXT-1S Connection Diagram .....	Page 10
16.SY120SA and SYRDK5 Connection Diagram .....	Page 11

**\*\*This is simple version of the instruction manual, for more detail information please check the complete version in the CD-ROM\*\***

## 1.Login/Logout Procedure



### 1-1 System login

Enter **FUN** + **2** + **EN** , the “OK” pilot lamp flashes and wait for enter password.

Enter password(preset : 1234) + **EN**, and **CALL** key flashes, it means login success.

Example : **【login procedure】**

**FUN** + **2** + **EN** + **1** **2** **3** **4** + **EN** .

### 1-2 System logout

Repeat enter **FUN** + **2** + **EN** after setup procedure to logout

### 1-3 Alter the Login Password

The login password preset three set, the beginning value are all set to 1234, suggest alter the three set password before using and avoid the unconcerned personnel to login system, the password alter method as following :

Use preset password(1234) login and enter **FUN** + **4** **1** + **【NNNN】** + **【NNNN】** + **EN** ,  
 (NNNN : new password , enter second time as confirm action)

Then enter **FUN** + **2** + **EN** to logout system to complete the first group password wetting.

The second and third password as the above procedure, repeat use preset password 1234 to login then modify three times as modify three groups password, please use new password to login after alter.

Example : **【use preset password to login】**

**FUN** + **2** + **EN** + **1** **2** **3** **4** + **EN**

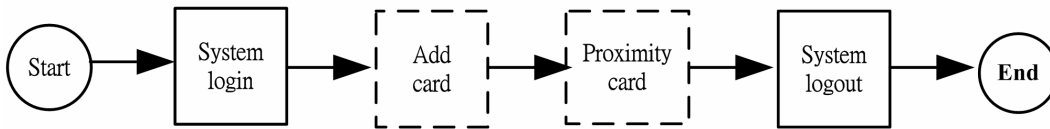
**【modify password to 5678】**

**FUN** + **4** **1** + **5** **6** **7** **8** + **5** **6** **7** **8** + **EN**

**【logout】**

**FUN** + **2** + **EN**

2. Add card operation procedure 【this function need to operate under login status】



**2-1 Add One Card**

Enter **FUN** + **3** **1** + **【NNNN】** + **【G】** + **EN** then proximity to one card.

NNNN : Assign add card number, range: 0001~2000 ◦

G : Assign card group number, range : 1~4 ◦

Example : **【add one card sequent number0001, and set to group 1】**

**FUN** + **3** **1** + **0** **0** **0** **1** + **1** + **EN**, proximity one un-use card.

**2-2 Add Multi Cards**

Enter **FUN** + **3** **5** + **【NNNN】** + **【G】** + **EN** and proximity card one by one.

NNNN : assign card serial numbers from 0001~2000 ◦

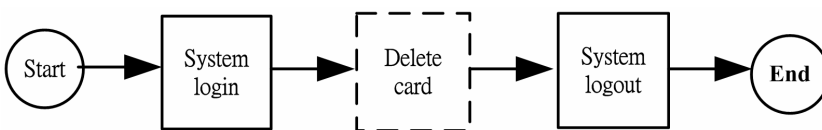
G : assign card group number, range : 1~4 ◦

Example : **【add five card from sequent number 0002 and set to group 1】**

**FUN** + **3** **5** + **0** **0** **0** **2** + **1** + **EN**, proximity five un-use cards

The sequent number will automatically edit 0002 to 0006, the group all set to 1.

3. Delete Card Operation Procedure 【this function needs to operate under login status】



**3-1 Delete One Card**

Enter **FUN** + **3** **2** + **【NNNN】** + **EN** ◦

NNNN : assign the card number which wants to delete, range : 0001~2000 ◦

Example : **【delete one card of sequent number 0001】**

**FUN** + **3** **2** + **0** **0** **0** **1** + **EN** ◦

### 3-2 Delete Multi Cards

Enter **FUN** + **3** **6** + **【NNNN】** + **【EEEE】** + **EN**。

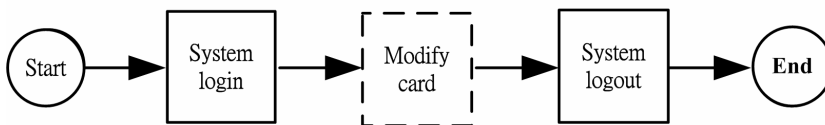
NNNN : assign the begin card number which wants to delete, range : 0001~2000。

EEEE : assign the end card number which want to delete, range 0001~2000。

Example : **【delete cards of sequent number from 0002~0006】**

**FUN** + **3** **6** + **0** **0** **0** **2** + **0** **0** **0** **6** + **EN**。

## 4.Modify Card Operation Procedure **【this function needs to operate under login status】**



### 4-1 Modify One CardGroup

Enter **FUN** + **3** **3** + **【NNNN】** + **【G】** + **EN**

NNNN : assign card number which wants to modify in the card group, range :0001~2000。

G : assign the new group number to card, range: 1~4。

Example : **【modify the original card sequent number 0001 in group 1 to group 2】**

**FUN** + **3** **3** + **0** **0** **0** **1** + **2** + **EN**

### 4-2 Modify One Card

Enter **FUN** + **3** **4** + **【NNNN】** + **【S】** + **EN**

NNNN : assign the card number which want to modify the card status; rnage:0001~2000。

S : S = 1 set up card enable ; S = 0 set up card disable

Example : **【disable the sequent number 0002 card】**

**FUN** + **3** **4** + **0** **0** **0** **2** + **0** + **EN**

**【restart the sequent number 0002 card】**

**FUN** + **3** **4** + **0** **0** **0** **2** + **1** + **EN**

### 4-3 Modify Multi Card Group

Enter **FUN** + **3** **7** + **【NNNN】** + **【EEEE】** + **【G】** + **EN**。

NNNN : assign the begin card number of card group which wants to modify; range :0001~2000

EEEE : assign the end card number of card group which wants to modify; range : 0001~2000

G : assign the new group number of card; range : 1~4。

Example : **【modify the original sequent number 0003~0006 cards of group 1 to group 2】**

**FUN** + **3** **7** + **0** **0** **0** **3** + **0** **0** **0** **6** + **2** + **EN**。

**4-4 Modify Multi Cards**

Enter **FUN** + **3** **8** + **【NNNN】** + **【EEEE】** + **【S】** + **EN** ◦

NNNN : assign the begin card number of card status which wants to modify; range:0001~2000

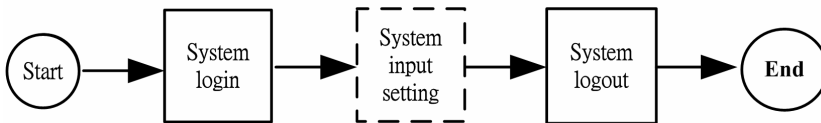
EEEE : assign the end number of card status which wants to modify; range: 0001~2000 ◦

S : S = 1 set up card enable ; S = 0 set up card disable

Example : **【disable the sequent number 0003~0006 cards】**

**FUN** + **3** **8** + **0** **0** **0** **3** + **0** **0** **0** **6** + **0** + **EN** ◦

**5. System DI Function Setup 【this function needs to operate under login status】**



Enter **FUN** + **6** **1** + **【K】** + **【F】** + **【J】** + **EN** ◦

K : the DI sequent number which wants to set up, range: 1~8 ◦

K = 5 as SY120SA CALL key ; K = 6 as expandkeypad reader CALL key ;

K = 7 as expandDI#1 ; K = 8 as expandDI#2 ◦

F : DI purpose number, please refer the below DI purpose table.

J : 0 for set to NO ( default ) , 1 for set to NC ◦

DI Purpose Table

Number	Purpose	Notation
0	Not use	
1	Door detect	(DI1 preset)
2	Open door button	(DI2 preset)
3	Emergency open door button	Open door and send out alarm until relief
4	Steal alarm set up status detect	Detect if complete deploy
5	Doorbell DI	(CALL key preset)
6	Emergency call button	Send out alarm until relief
7	One area alarm detect	Send out alarm until relief (deploy status)
8	Two area alarm detect	Send out alarm until relief (deploy status)
9	Anti- force detect	Send out alarm until relief

**6. System DO Function Setup 【this function needs to operate under login status】**



Enter **FUN** + **7 1** + **【K】** + **【F】** + **【TTT】** + **EN** .

K : The DO sequent number which wants to set up;

K = 1 as electric lock DO,

K = 2 as relay DO,

K = 3 as expand relay DO,

K = 4 as pre-save DO

F : DO purpose number, please refer the below DO purpose table.

TTT : DO action time set up, range: 000~255, unit: second; default electric lock DO for 5 seconds, relay DO for 2seconds.

DO Purpose Table

Number	Purpose	Notation
0	Not use	
1	Open door control	(electric lock DO preset)
2	Doorbell contact output	(relay DO preset)
3	Burglar alarm output	Deploy and withdraw controlled
4	Alarm contact output	Use withdraw to cancel alarm
5	Anti-force contact output	Use[FUN][4][4]to cancel anti-force alarm

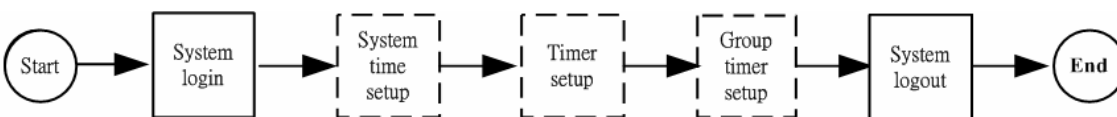
※Action time set “0” for keeps action until relief

Example : 【set up expand open door button, action time 3seconds (set up DI and DO together)】

DI : **FUN** + **6 1** + **1** + **2** + **0** + **EN**

DO : **FUN** + **7 1** + **2** + **1** + **0 0 3** + **EN**

**7. System Group and Timer Control Function Operation 【this function needs to operate under login status】**



**7-1 System Ttime Setup**

Enter **FUN** + **8 1** + **【YYYY】** + **【MM】** + **【DD】** + **【hh】** + **【mm】** + **【ss】** + **EN**

YYYY : year, range: 2000~2199 ◦ (MM) : month, range: 01~12 ◦

DD : day, range: 01~31 ◦

hh : hour, range: 00~23 ◦

mm : minute, range: 00~59 ◦

ss : second, range: 00~59 ◦

※Partly week automatically count by controller

Example: **【set up April/15/2004 time: 16:30】**

**FUN** + **8 1** + **2 0 0 4** + **0 4** + **1 5** + **1 6** + **3 0** + **0 0** + **EN**

**7-2 Timer Setup**

Enter **FUN** + **8 2** + **【HHMM】** + **【hhmm】** + **EN**

HHMM : the time setting of timer begin; hour/mintue; default 0700

hhmm : time setting of timer end; hour/mintue; default 1900

Example : **【set up timer from 8am to 6pm】**

**FUN** + **8 2** + **【0800】** + **【1800】** + **EN**

**7-3 group timer set uo ( passage way setup )**

Enter **FUN** + **8 3** + **【G】** + **【D】** + **【N】** + **【A】** + **EN**

G : group number ( 1 ~ 4 )

D : in timer ( 0 ~ 3 )※

N : out of timer ( 0 ~ 3 )※

A : door passage, 1= pass enable ( preset ) , 0= pass disable

※In and out of timer function table	
0	Can not pass
1	Card or password
2	Card ( system default )
3	Card and password

Example : **【Set up group 1 to use “ card and password” for passage in the timer and can not pass out of timer】**

**FUN** + **8 3** + **1** + **3** + **0** + **1** + **EN**

**7-4 Holiday Setup**

Enter **FUN** + **8 5** + **【HH】** + **【MMDD】** + **EN** ◦

HH : holiday sequent number, range: 01~30, if set to “00” is for clear all holiday setting.

MMDD : The holiday date which wants to assign to the sequent number

Example : **【set up holiday sequent number 01 define new year】**

**FUN** + **8 5** + **0 1** + **0 1 0 1** + **EN**

**7-5 group weekly plan**

Enter **FUN** + **8** **4** + **G** + **WWWWWW** + **H** + **EN**

WWWWWW : weekly plan from Sunday to Saturday, 1= can pass ( default ) , 0= can not pass

G : group number; range: 1~4 .

H : holiday control, 1= can pass ( default ) , 0= can not pass

Example : **【 set up group 1 normal passage from Monday to Friday, Saturday, Sunday and holiday can not pass 】**

**FUN** + **8** **4** + **1** + **0** **1** **1** **1** **1** **1** **0** + **0** + **EN**

**8. Set up card number and password open door way**

**【 this function needs to operate under login status 】**



**8-1 Use card number plus password to open the door or password only to open the door**

※need to set up group for card or passage way (for the set up method please refer to 8-3)

Enter **FUN** + **5** **1** + **P** + **EN** .

P : P = 1 as use card number and password(default) ; P = 0 as direct password open door.

Example : **【 if already set up card or password open door then set up card number and password open door 】**

**FUN** + **5** **1** + **1** + **EN**

※now, before use password to open the door, it requires to enter the card number with password.

For example: first, enter the user's card number, then enter the default password number to open the door

**0** **0** **0** **1** + **0** **0** **0** **0** + **EN**

**8-2 alter user preset password ( default define 0000 )**

Enter **FUN** + **5** **2** + **nnnn** **nnnn** + **EN**

nnnn : new password, enter twice to confirm

Example : **FUN** + **5** **2** + **3** **4** **5** **6** + **3** **4** **5** **6** + **EN**

※ alter one card password setting(no need to login, can operate under normal status )

**【 The situation of group set up open door mode as card and password 】**

Proximity the card which wants to set up or modify, the card reader will display wait for password enter status and stop read card function,

Enter **pppp** + **nnnn** + **nnnn** + **EN**

pppp : the original old password or system first set up password; default define 0000

nnnn : new password, enter twice to confirm.



Example : card password alter from 0000 to 5678

After proximity card then enter  $\boxed{0} \boxed{0} \boxed{0} \boxed{0} + \boxed{5} \boxed{6} \boxed{7} \boxed{8} + \boxed{5} \boxed{6} \boxed{7} \boxed{8} + \boxed{EN}$

The card password change from 0000 to 5678

**【group set up open door mode to password open door mode】**

Enter **【NNNN】 + 【pppp】 + 【nnnn】 + 【nnnn】 +  $\boxed{EN}$**  , the system will decide correct or not, and will response correct status and modify the old password to new password.

NNNN : effective card number, 0001~2000

pppp : the original password or system preset password (default password is 0000)

nnnn : new password, enter twice to confirm.

Example : the password of card number 0001 change from 5678 to 2468

Enter  $\boxed{0} \boxed{0} \boxed{0} \boxed{1} + \boxed{5} \boxed{6} \boxed{7} \boxed{8} + \boxed{2} \boxed{4} \boxed{6} \boxed{8} + \boxed{2} \boxed{4} \boxed{6} \boxed{8} + \boxed{EN}$

The card password change from 5678 to 2468 .

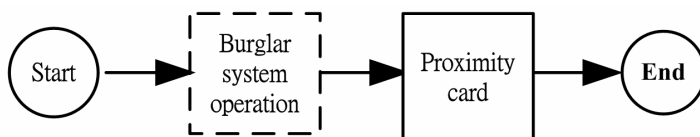
## 9. System default

### 9-1 Clear all setting and restore to default (including card data, parameters, and I/O data...etc.)

Under login status, enter  $\boxed{FUN} + \boxed{4} \boxed{9} + \boxed{EN}$ , it will response the correct status if correct;

then enter  $\boxed{FUN} + \boxed{4} \boxed{9} + \boxed{EN}$  again and wait for ten seconds to clear all setting and restore to default.

## 10. Steal Alarm System Function Setup



### 10-1 Steal Alarm system relief 【withdraw】

Enter  $\boxed{FUN} + \boxed{0} + \boxed{EN}$ , the OK pilot lamp flash once, the warning light go out after proximity card then burglarproof system complete relief.

### 10-2 Start Steal Alarm System 【deploy】

Enter  $\boxed{FUN} + \boxed{1} + \boxed{EN}$ , the pilot lamp flash once, after proximity card the warning light flashes, the burglarproof system start operating complete.

## 11. Anti-Force Function Setup



### 11-1 anti-force password start using

Enter **FUN** + **4** **3** + **G** + **P** **P** **P** **P** + **EN**.

G: anti-force password group, range: 1~4.

PPPP: enter anti-force password.

※ system default 1-4 groups all define 5555. If personal password the same with anti-force password, it will take as personal password.

### 11-2 Set up anti-force alarm

Enter **FUN** + **4** **4** + **E** + **EN**.

E = 1 : execute anti-force alarm ; E = 0 : cancel anti-force alarm ( default ) .

Example : **【enter anti-force password to start the DO which we choose(relay DO default) 】,**

Anti-force password start using **FUN** + **4** **3** + **G** + **5** **5** **5** **5** + **EN**.

Execute anti-force alarm **FUN** + **4** **4** + **1** + **EN**.

DO : **FUN** + **7** **1** + **2** + **5** + **0** **0** **3** + **EN**

## 12. Expand Function Set up

### 12-1 Expand module Setup

Enter **FUN** + **5** **7** + **E** + **EN**

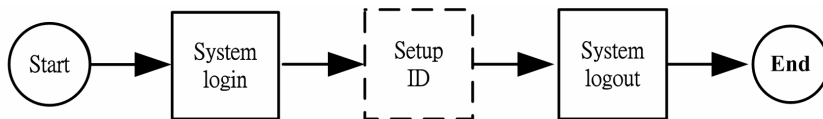
E = 1 : has external expand module ; E = 0 : no external expand module ( default )

### 12-2 Expand Card Reader Setup

Enter **FUN** + **5** **9** + **S** + **EN**

S = 1 : standard card reader ; S = 0 : keypad card reader ( default )

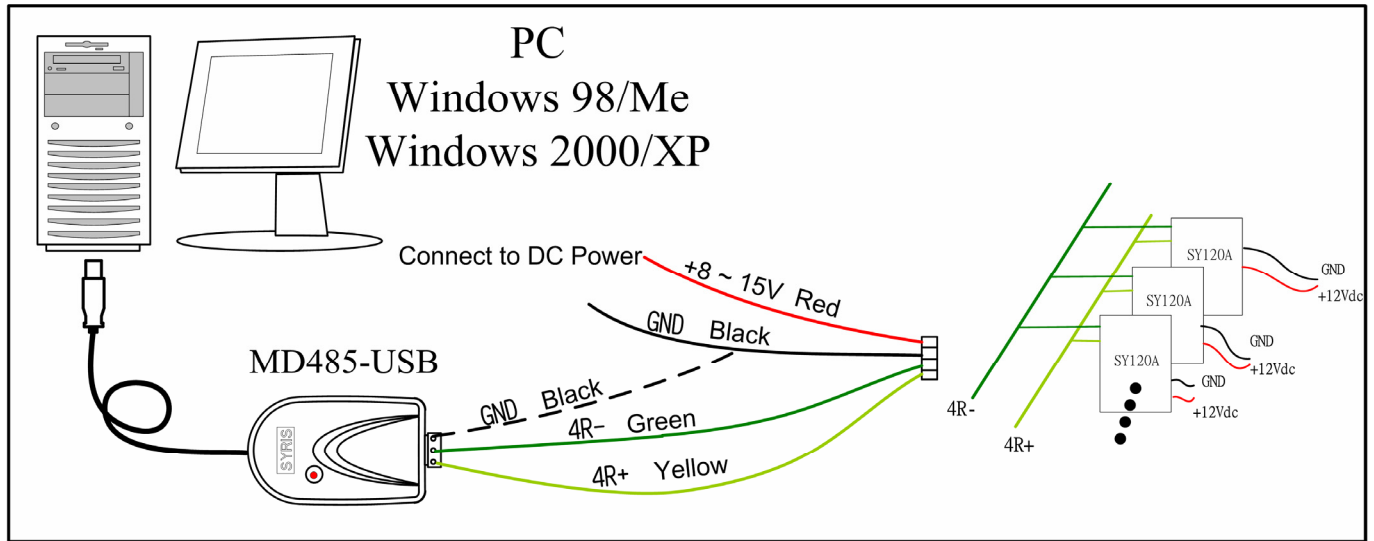
## 13. System Communication Identify Number Setup



Enter **FUN** + **9** **1** + ( **N** **N** **N** ) + **EN**

( **N** **N** **N** ) : controller identify ID, range: 0 0 1 ~ 9 9 9 ; preset 0 0 1 .

14.SY120SA and Other SY120SA Wiring Diagram



15.SY120SA and MD120EXT-1S Wiring Diagram

SY120SA & MD120EXT-1S WIRING DIAGRAM

